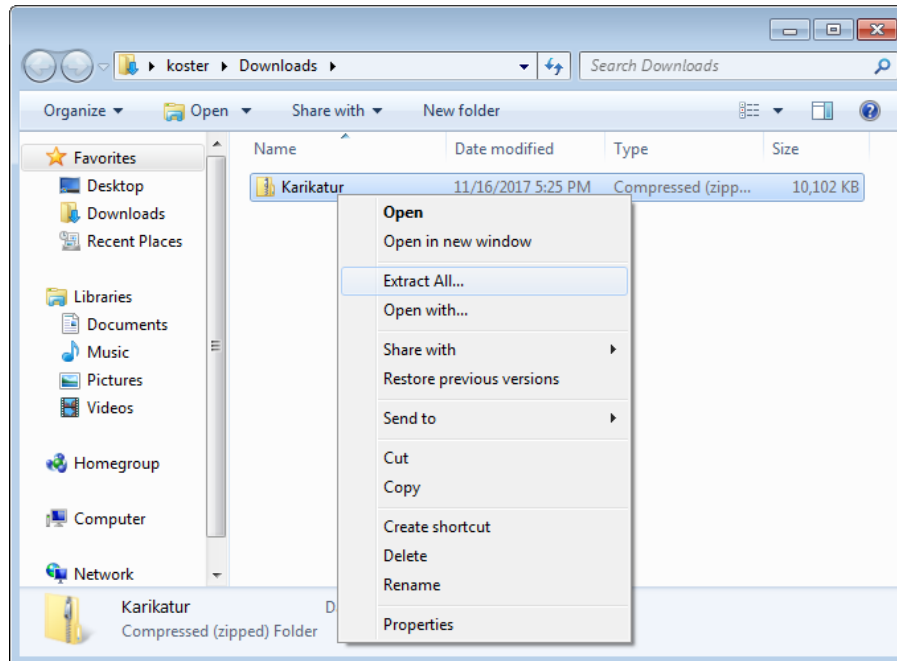


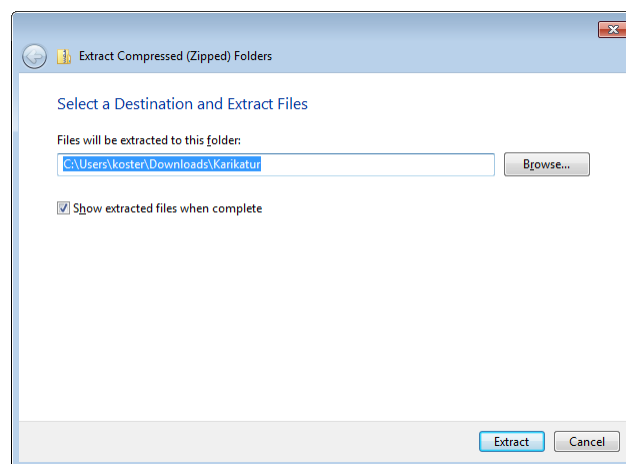
## Caricature application for Windows

### Installation

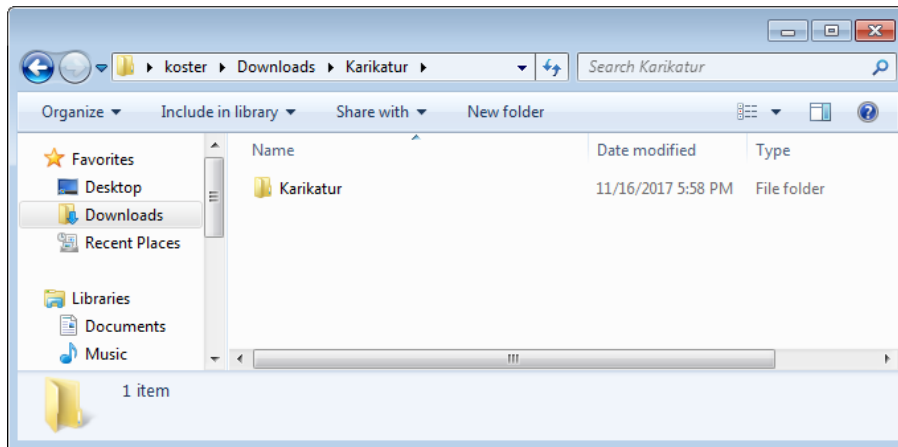
- Download the archive.
- Right-click the downloaded file and select “Extract All...”.



- Select the destination directory where to unpack the files and click “Extract”.



- A folder named “Karikatur” will be created.



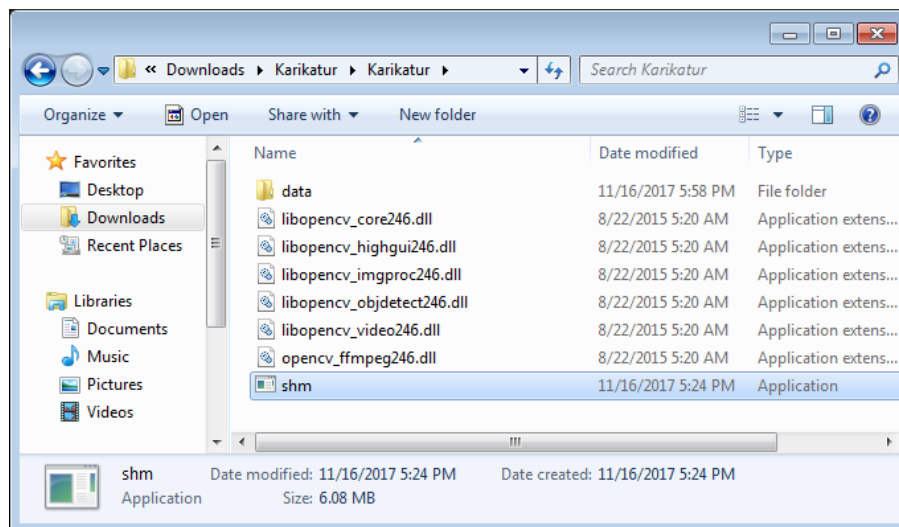
- Remove the installation archive.

## Uninstall

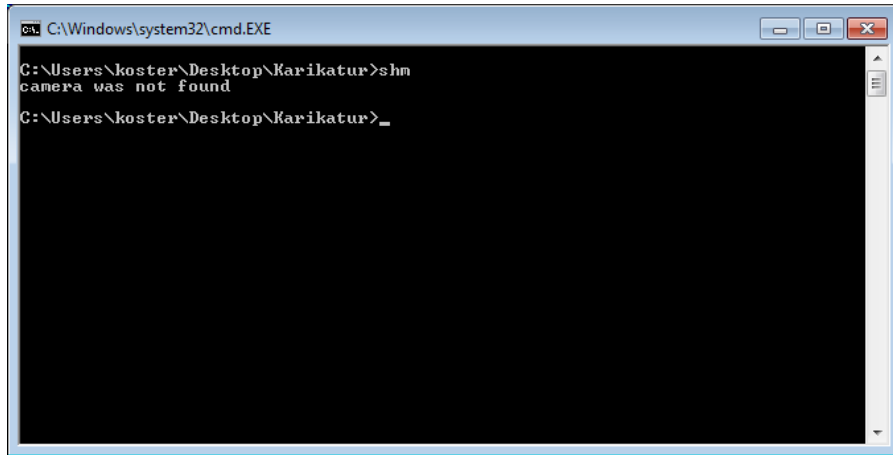
- Close the Caricature application if it is running.
- Remove the “Karikatur” folder from the computer.

## Operation

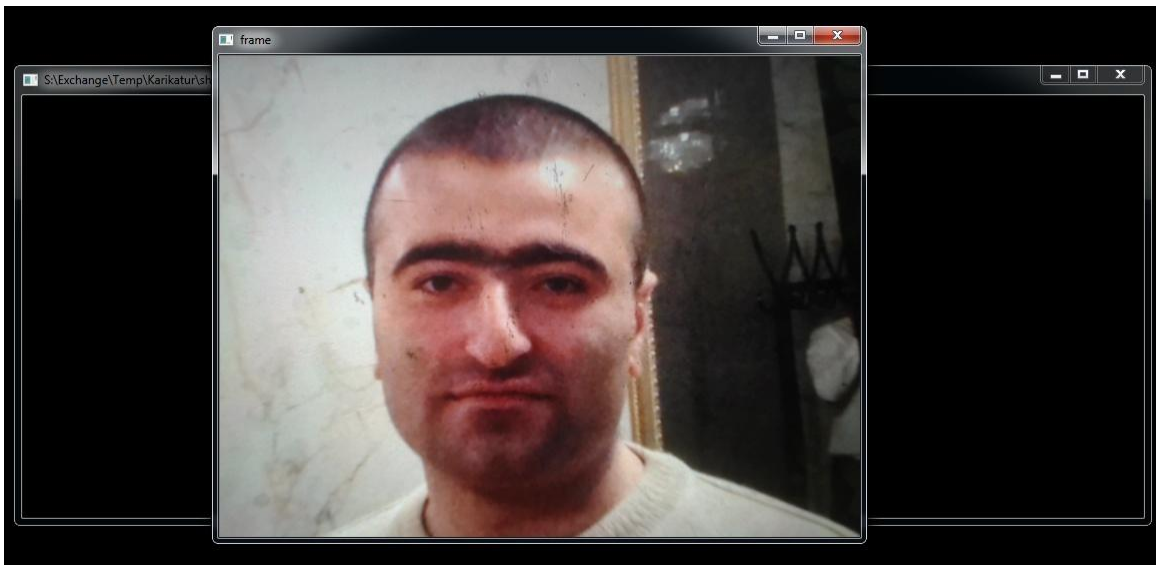
- Ensure that computer has a camera (built-in or external).
- Go to the folder where application is unpacked to and run the “shm” application.



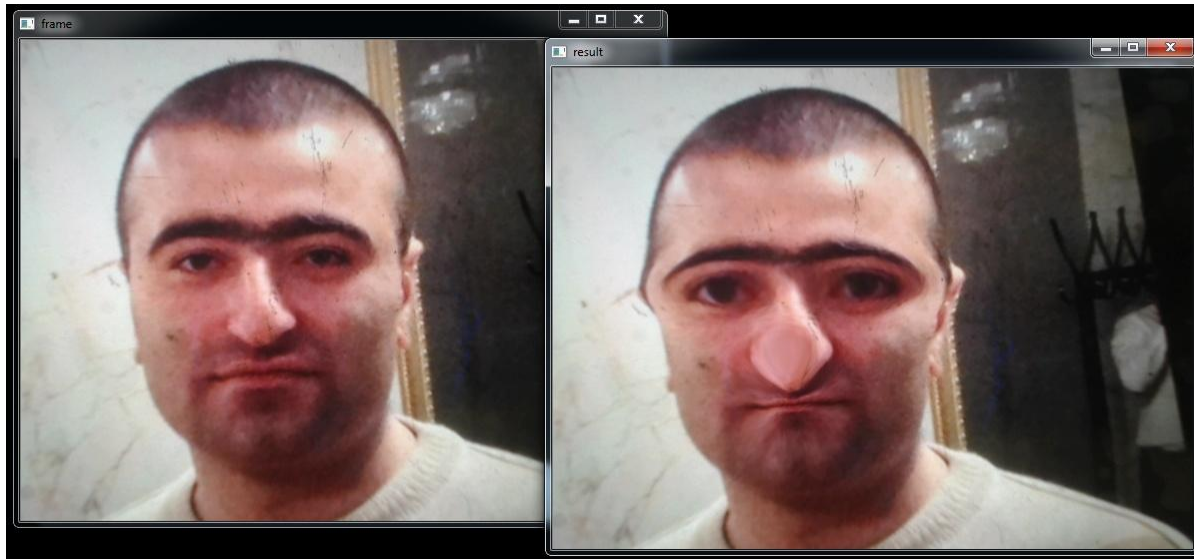
- Two windows will popup, the console black window (“scm.exe”) and source image window (“frame”). If console window opens and closes immediately, or if you see the following error instead, it is probably due to no camera is configured in the system.



- Ensure that the source image window is active by clicking inside it.



- Choose the transformation effect by pressing its number (1 to 6) on the keyboard. The second window should popup (“result”), displaying the transformed image.



- To close application, just press Esc on the keyboard having any of the image windows active.